



2014-15

Snapshot Matraville and Chifley

- road upgrades for Menin Road, Moorina Avenue and Shirley Lane in Matraville
- **new footpaths for Barwon Crescent, Gwydir Avenue, Hunter Avenue, Knowles Avenue, Military Road, Namoi Road and Paterson Street in Matraville**
- **construction of toilets and clubhouses, an all-abilities playground and a skate facility at Chifley Sports Reserve**
- road upgrades for Kenny Avenue, Macquarie Street and Mawson Parade in Chifley
- **new footpath for Dampier Street in Chifley**

Matraville:

Population: **9,038**

Total dwellings: **3,445**

Chifley:

Population: **3,144**

Total dwellings: **1,185**

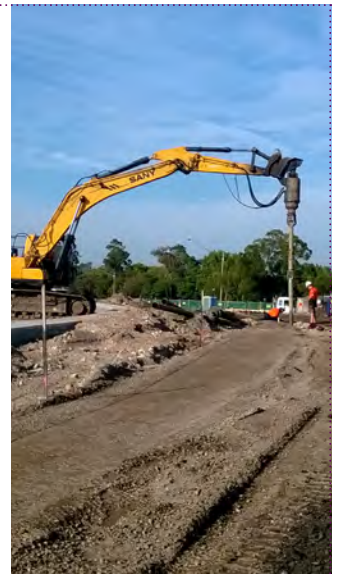
Have your say

Tell us what you think about Randwick City Council's draft \$158 million Budget and Operational Plan at www.yoursayrandwick.com.au/budget2015. Submissions close 3 June 2014. For more information call 1300 722 542.

Highlight

New facilities for Chifley Sports Reserve:

The \$11 million transformation of the former garbage tip continues. By summer 2014, residents and local sports players will be enjoying a multi-purpose sports field, senior and junior baseball fields, flood lighting, car parking, landscaping and footpaths. And there's plenty more on the agenda - next year there are plans to build a new all-abilities children's playground, skate park, outdoor gym, and multi-use amenities facility including change rooms, toilets, community meeting room, kiosks and storage.



Record spend on roads and footpaths

\$10 million towards roads construction and improvements across Randwick City, including \$1.7 million allocated to building and upgrading footpaths, and \$250,000 for new cycling facilities.

