

ISSUED FOR CONSTRUCTION
30 September 2016

NOTES:
LINE MARKING TO BE INSTALLED IN ACCORDANCE WITH THE RMS DELINEATION GUIDELINES AND AUSTRALIAN STANDARDS. REFER TO DWG 2411.BOW.002 FOR LINEMARKING NOTES AND DWG 2411.BOW.018 FOR STEM FOOTING DETAIL. F.O.K. DENOTES FACE OF KERB.

SIGNAGE LEGEND

	EXISTING SIGN TO BE REMOVED (TYPICAL)
	EXISTING SIGN TO BE RETAINED (TYPICAL)
	PROPOSED NEW SIGN (TYPICAL)
	EXISTING SIGN STEM TO BE REMOVED

Copyright © 2016 The City of Sydney. All rights reserved. This document is the property of the City of Sydney. It is not to be used for any other purpose without the written consent of the City of Sydney. The City of Sydney is not responsible for any errors or omissions in this document.

10 Regent Street
Chippendale NSW 2008
p 02 9282 9600
f 02 9282 9277
www.completeurban.com.au

COMPLETE

SCALE 1:100 @ A1

Drawn	R.C.	Designed	M.J.
Checked	N.P.	Checked	I.G.
Approved		FOR CONSTRUCTION	

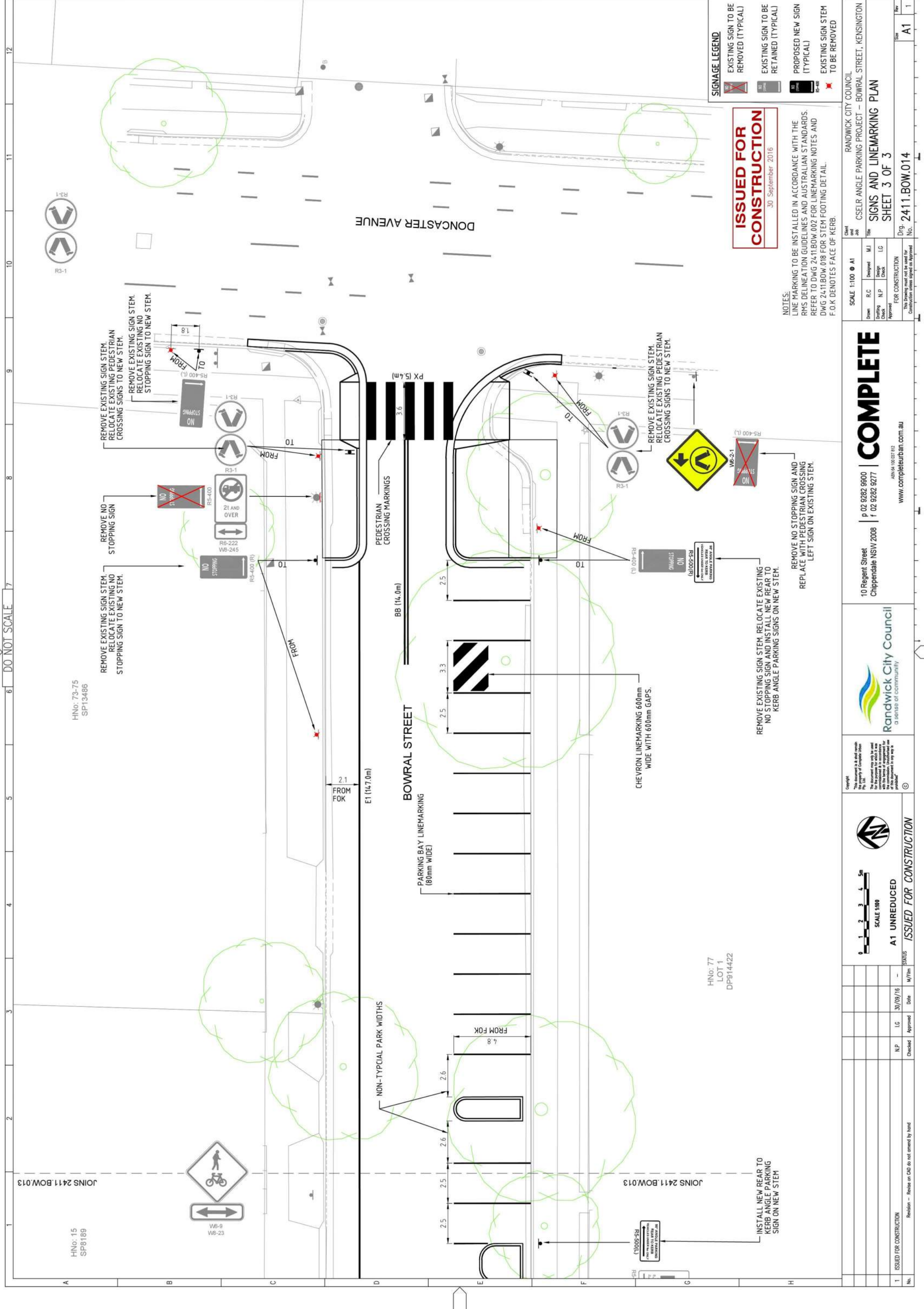
The Drawing must not be used for Construction unless signed or Approved.

Client and Job Title: RANDWICK CITY COUNCIL
CSELR ANGLE PARKING PROJECT – BOWRAL STREET, KENSINGTON

SIGNS AND LINEMARKING PLAN
SHEET 2 OF 3

Dwg. No.: 2411.BOW.013

No.	1	ISSUED FOR CONSTRUCTION	Checked	NP	Approved	IG	Date	30/09/16	M/Fin	
Revision - Review on CAD do not amend by hand										



HNo: 73-75
SP13486

HNo: 15
SP8189



HNo: 77
LOT 1
DP914422

ISSUED FOR CONSTRUCTION	Checked	Approved	Date	STATUS
	N.P	LG	30/09/16	-
Resubmit - Review on CAD do not amend by hand				

SCALE 1:100
A1 UNREDUCED
 ISSUED FOR CONSTRUCTION

Randwick City Council
 a sense of community

10 Regent Street
 Chippendale NSW 2008
 p 02 9282 9600
 f 02 9282 9277
 www.completeurban.com.au

COMPLETE
 FOR CONSTRUCTION
 This drawing must not be used for construction unless signed as approved

Client	Job	Scale	Drawn	R.C	Designed	M.J	Checked	Approved	FOR CONSTRUCTION	Construction status signed as approved
Randwick City Council	CSELR ANGLE PARKING PROJECT - BOWRAL STREET, KENSINGTON	SCALE 1:100 @ A1								
SIGNS AND LINEMARKING PLAN SHEET 3 OF 3										
No. 2411.BOW.014 Size A1										

ISSUED FOR CONSTRUCTION
 30 September 2016

SIGNAGE LEGEND

	EXISTING SIGN TO BE REMOVED (TYPICAL)
	EXISTING SIGN TO BE RETAINED (TYPICAL)
	PROPOSED NEW SIGN (TYPICAL)
	EXISTING SIGN STEM TO BE REMOVED

NOTES:
 LINE MARKING TO BE INSTALLED IN ACCORDANCE WITH THE RMS DELINEATION GUIDELINES AND AUSTRALIAN STANDARDS. REFER TO DWG 24-11.BOW.002 FOR LINEMARKING NOTES AND DWG 24-11.BOW.018 FOR STEM FOOTING DETAIL. F.O.K DENOTES FACE OF KERB.