

JOINS 2411.G00.013

JOINS 2411.G00.013

DO NOT SCALE

INSTALL IP PARKING SIGN ON NEW SIGN STEM TO PROPOSED LOCATION

IP
RS-342 (R)

2.1 FROM FOK
E1 (62.8m)

GOODWOOD STREET

ANZAC PARADE

PARKING BAY LINEMARKING (80mm WIDE)

2.5
4.8
2.5
FROM FOK

RS-40P (R) 2-5P
NO STOPPING
RS-500(L)

R4-10
AREA 50
END 50
AREA
R4-11

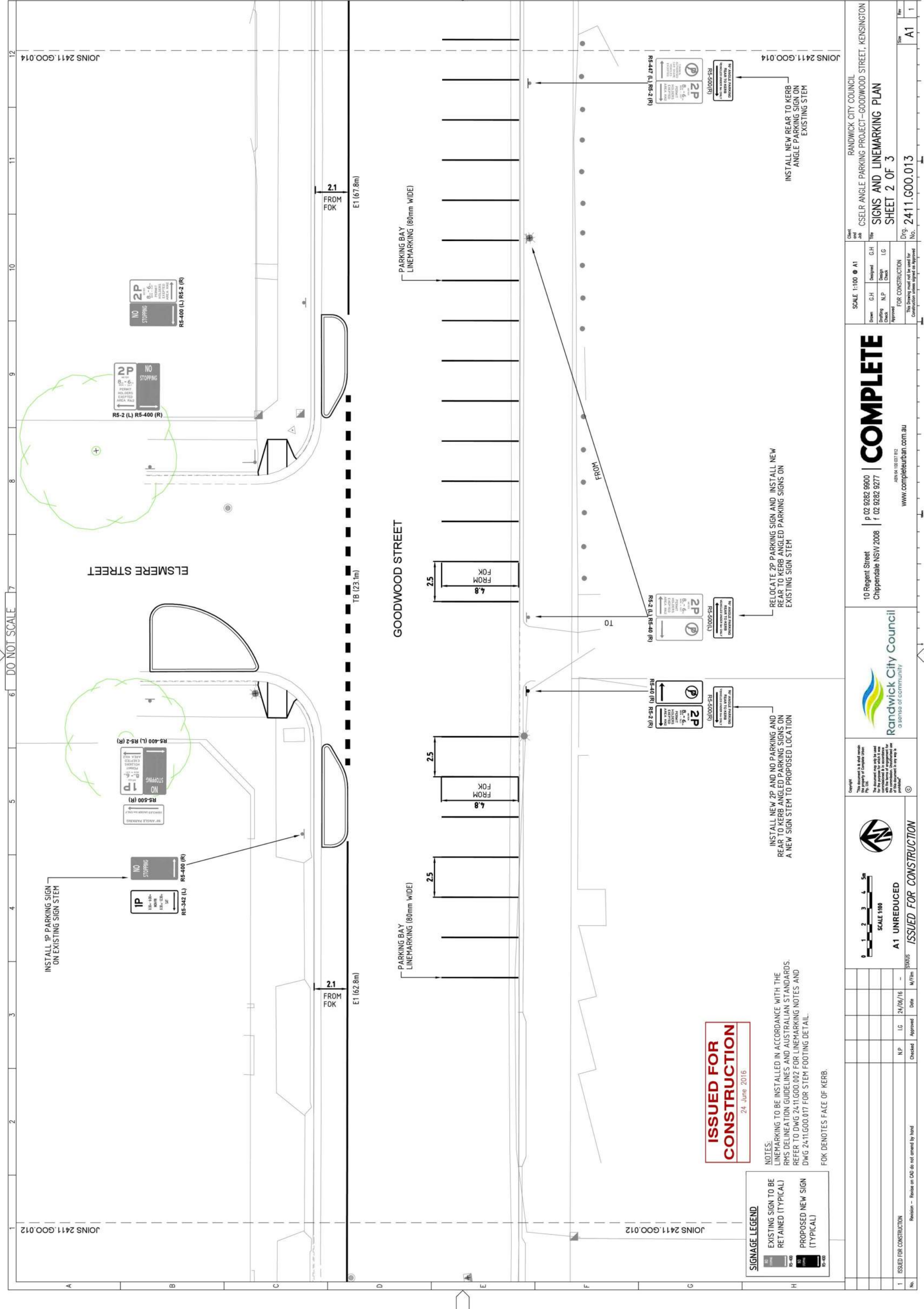
REMOVE EXISTING SIGN STEM. RELOCATE EXISTING NO STOPPING SIGN AND INSTALL NEW 2P PARKING AND REAR TO KERB ANGLE PARKING SIGNS ON NEW STEM, TO PROPOSED LOCATION

ISSUED FOR CONSTRUCTION
24 June 2016

SIGNAGE LEGEND
 EXISTING SIGN TO BE REMOVED (TYPICAL)
 EXISTING SIGN TO BE RETAINED (TYPICAL)
 PROPOSED NEW SIGN (TYPICAL)
 EXISTING SIGN STEM TO BE REMOVED

NOTES:
 LINEMARKING TO BE INSTALLED IN ACCORDANCE WITH THE RMS DELINEATION GUIDELINES AND AUSTRALIAN STANDARDS. REFER TO DWG 24-11.G00.002 FOR LINEMARKING NOTES AND DWG 24-11.G00.017 FOR STEM FOOTING DETAIL.
 FOK DENOTES FACE OF KERB.

<p>10 Regent Street Chippendale NSW 2008 p 02 9282 9600 f 02 9282 9277 www.completeurban.com.au</p>		<p>10 Regent Street Chippendale NSW 2008 p 02 9282 9600 f 02 9282 9277 www.completeurban.com.au</p>		<p>10 Regent Street Chippendale NSW 2008 p 02 9282 9600 f 02 9282 9277 www.completeurban.com.au</p>													
<p>Copyright This document is the property of Complete Urban Pty. Ltd. It is to be used only for the purposes for which it was prepared & is not to be reproduced, stored in a retrieval system, or transmitted in any form or by any means, electronic, mechanical, photocopying, recording, or otherwise, without the prior written permission of Complete Urban Pty. Ltd.</p>		<p>Scale 1:100 @ A1</p> <table border="1"> <tr> <th>Drawn</th> <th>G.H</th> <th>Designed</th> <th>G.H</th> </tr> <tr> <td>Checked</td> <td>N.P</td> <td>Checked</td> <td>I.G</td> </tr> <tr> <td>Approved</td> <td></td> <td>FOR CONSTRUCTION</td> <td></td> </tr> </table> <p>The Drawing must not be used for Construction unless signed or Approved</p>		Drawn	G.H	Designed	G.H	Checked	N.P	Checked	I.G	Approved		FOR CONSTRUCTION		<p>Client and Job Title RANDWICK CITY COUNCIL CSELFR ANGLE PARKING PROJECT-GOODWOOD STREET, KENSINGTON</p>	
Drawn	G.H	Designed	G.H														
Checked	N.P	Checked	I.G														
Approved		FOR CONSTRUCTION															
<p>Scale 1:100 @ A1</p> <p>UNREduced</p> <p>ISSUED FOR CONSTRUCTION</p>		<p>Scale 1:100 @ A1</p> <p>UNREduced</p> <p>ISSUED FOR CONSTRUCTION</p>		<p>Scale 1:100 @ A1</p> <p>UNREduced</p> <p>ISSUED FOR CONSTRUCTION</p>													
<p>1 ISSUED FOR CONSTRUCTION</p>		<p>NP I.G 24/06/16</p>		<p>Approved</p>													
<p>Revision - Review on CAD do not amend by hand</p>		<p>Checked</p>		<p>Date</p>													
<p>No.</p>		<p>1</p>		<p>Size</p>													
<p></p>		<p>A1</p>		<p>No.</p>													
<p></p>		<p>1</p>		<p></p>													



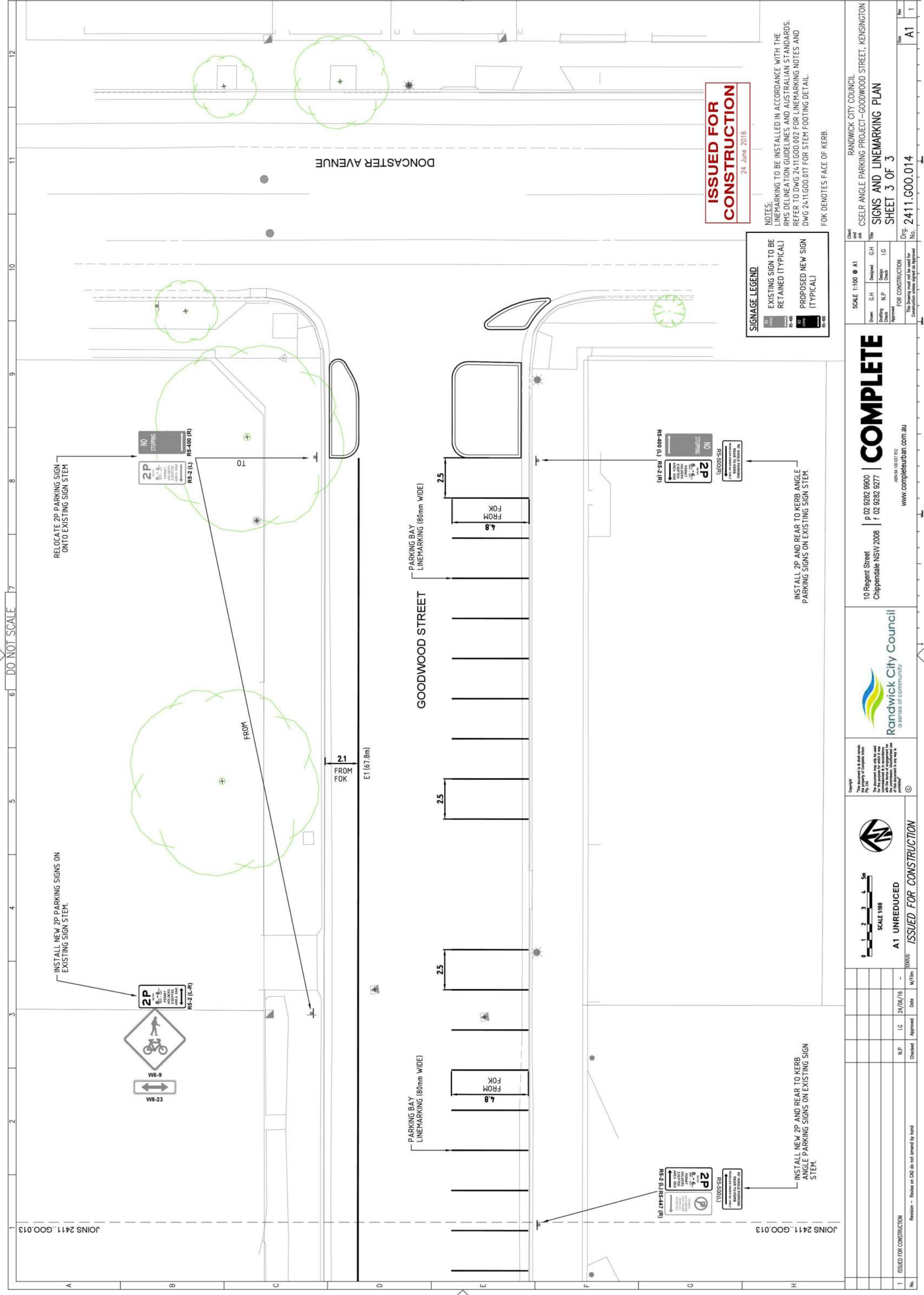
ISSUED FOR CONSTRUCTION
24 June 2016

NOTES:
 EXISTING SIGN TO BE RETAINED (TYPICAL)
 PROPOSED NEW SIGN (TYPICAL)
 FOK DENOTES FACE OF KERB.
 SIGNAGE TO BE INSTALLED IN ACCORDANCE WITH THE RMS DELINEATION GUIDELINES AND AUSTRALIAN STANDARDS. REFER TO DWG 24-11.G00.002 FOR LINEMARKING NOTES AND DWG 24-11.G00.017 FOR STEM FOOTING DETAIL.

SIGNAGE LEGEND

	EXISTING SIGN TO BE RETAINED (TYPICAL)
	PROPOSED NEW SIGN (TYPICAL)

<p>Copyright This document is the property of Complete Urban Pty. Ltd. It is not to be used for any other project without the written consent of Complete Urban Pty. Ltd. The information contained herein is confidential and its use for any other project without the written consent of Complete Urban Pty. Ltd. is prohibited.</p>		<p>10 Regent Street Chippendale NSW 2008 p 02 9282 9600 f 02 9282 9277 www.completeurban.com.au</p>		<p>100% COMPLETE</p>		<p>SCALE 1:100 @ A1</p>		<p>Client and Job No. RANDWICK CITY COUNCIL Project Title CSELR ANGLE PARKING PROJECT - GOODWOOD STREET, KENSINGTON Drawing Title SIGNS AND LINEMARKING PLAN Drawing No. SHEET 2 OF 3</p>	
<p>1 ISSUED FOR CONSTRUCTION</p>		<p>Checked N.P. Approved L.G. Date 24/06/16</p>		<p>Revised - Review on CAD do not amend by hand</p>		<p>Revision No. 1</p>		<p>Scale A1</p>	



ISSUED FOR CONSTRUCTION
24 June 2016

NOTES:
 LINEMARKING TO BE INSTALLED IN ACCORDANCE WITH THE RMS DELINEATION GUIDELINES AND AUSTRALIAN STANDARDS.
 REFER TO DWG 2411.G00.002 FOR LINEMARKING NOTES AND DWG 2411.G00.017 FOR STEM FOOTING DETAIL.
 FOK DENOTES FACE OF KERB.

SIGNAGE LEGEND

EXISTING SIGN TO BE RETAINED (TYPICAL)	PROPOSED NEW SIGN (TYPICAL)
RS-400	RS-400
RS-400	RS-400

INSTALL 2P AND REAR TO KERB ANGLE PARKING SIGNS ON EXISTING SIGN STEM.

RELOCATE 2P PARKING SIGN ONTO EXISTING SIGN STEM

INSTALL NEW 2P PARKING SIGNS ON EXISTING SIGN STEM.

No.	1	ISSUED FOR CONSTRUCTION	Checked	NP	LG	24/06/16	M/Firm	STATUS	ISSUED FOR CONSTRUCTION	<p>Randwick City Council a sense of community</p>	<p>10 Regent Street Chippendale NSW 2008 p 02 9282 9600 f 02 9282 9277 www.completeurban.com.au</p>	<p>COMPLETE</p>	<p>SCALE 1:100 @ A1</p>	<p>Client and Job Title RANDWICK CITY COUNCIL CSELFR ANGLE PARKING PROJECT-GOODWOOD STREET, KENSINGTON</p>
	Revision		Approved						<p>Drawn G.H Checked N.P Designed G.H Checked I.G</p> <p>FOR CONSTRUCTION Approved The Drawing must not be used for Construction unless signed or Approved</p>					