

**ISSUED FOR CONSTRUCTION**  
20 July 2016

SCALE 1:100 @ A1

Drawn	M.J.	Designed	M.J.
Checked	N.P.	Checked	I.G.
Approved		FOR CONSTRUCTION	

The Drawing must not be used for Construction unless signed or Approved.

**COMPLETE**

10 Regent Street  
Chippendale NSW 2008  
p 02 9282 9600  
f 02 9282 9277  
www.completeurban.com.au

**Randwick City Council**  
a sense of community

Copyright © 2016  
This document is the property of Complete Urban Pty Ltd. All rights reserved. This document is confidential and its use for any purpose other than that intended by Complete Urban Pty Ltd is prohibited without the written consent of Complete Urban Pty Ltd.

**ISSUED FOR CONSTRUCTION**  
A1 UNREduced

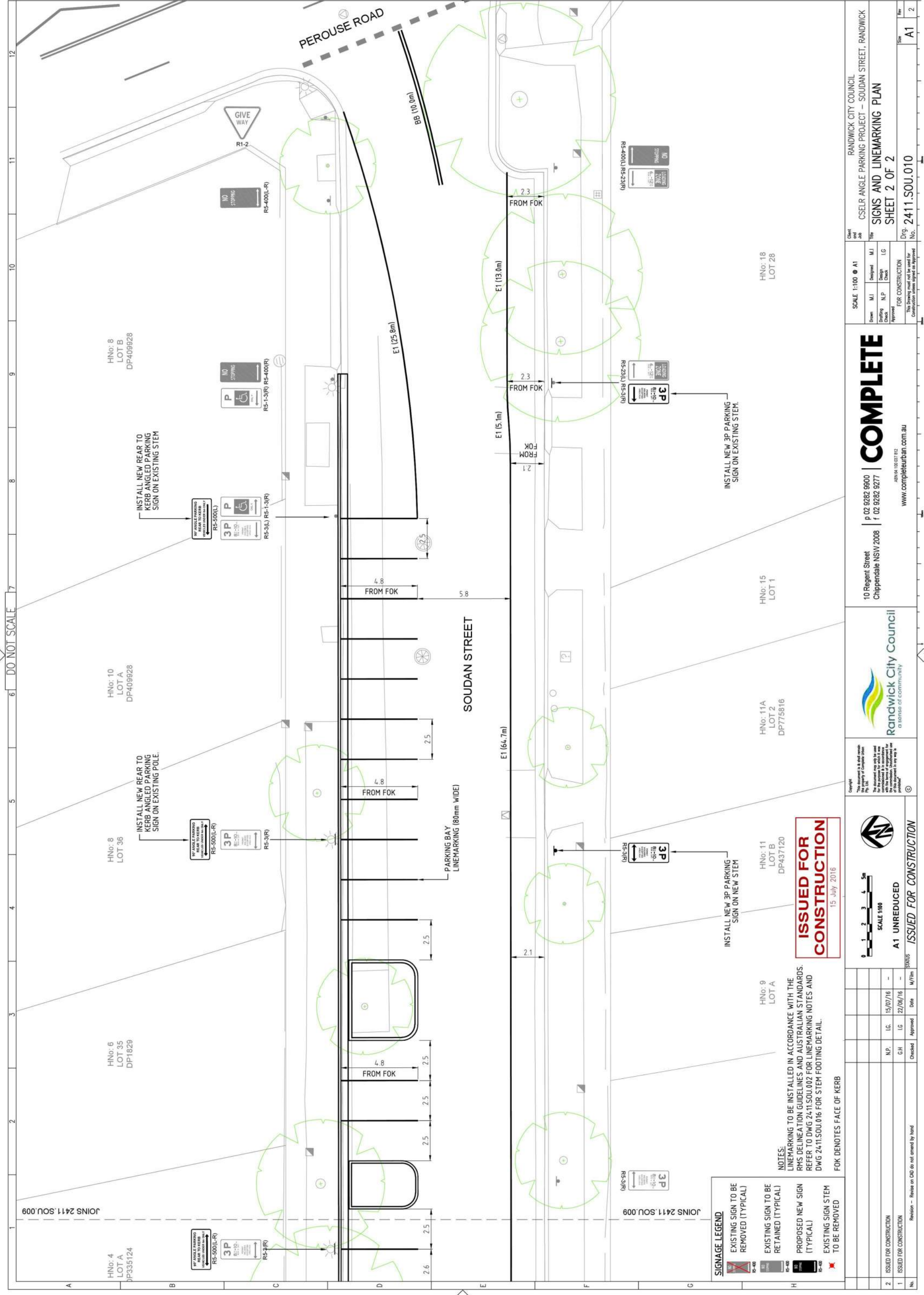
No.	Description	Checked	Approved	Date	M/F/In	Status
2	ISSUED FOR CONSTRUCTION	N.P.	I.G.	15/07/16	-	-
1	ISSUED FOR CONSTRUCTION	G.H.	I.G.	22/06/16	-	-

Revision - Review on CAD do not amend by hand

Notes:  
 - LINEMARKING TO BE INSTALLED IN ACCORDANCE WITH THE RMS DELINEATION GUIDELINES AND AUSTRALIAN STANDARDS.  
 - REFER TO DWG 2411.SOU.002 FOR LINEMARKING NOTES AND DWG 2411.SOU.016 FOR STEM FOOTING DETAIL.  
 - FOK DENOTES FACE OF KERB

**SIGNAGE LEGEND**  
 - EXISTING SIGN TO BE REMOVED (TYPICAL)  
 - EXISTING SIGN TO BE RETAINED (TYPICAL)  
 - PROPOSED NEW SIGN (TYPICAL)  
 - EXISTING SIGN STEM TO BE REMOVED

Client and Job: RANDWICK CITY COUNCIL  
 Title: CSELR ANGLE PARKING PROJECT – SOUDAN STREET, RANDWICK  
 Drawn: HNo: 2 LOT B DP335124  
 Designed: HNo: 3 LOT B DP434976  
 Checked: HNo: 5 LOT A DP434976  
 Approved: HNo: 7 LOT 31 DP1829  
 Title: SIGNS AND LINEMARKING PLAN  
 Sheet: SHEET 1 OF 2  
 Dwg. No: 2411.SOU.009  
 Rev. No: A1



DO NOT SCALE

JOINS 2411.SOU.009

HNo: 4  
LOT A  
DP335124

HNo: 6  
LOT 35  
DP1828

HNo: 8  
LOT 36

HNo: 10  
LOT A  
DP409928

HNo: 8  
LOT B  
DP409928

HNo: 10  
LOT 38  
DP409928

INSTALL NEW REAR TO KERB ANGLED PARKING SIGN ON EXISTING POLE.

INSTALL NEW REAR TO KERB ANGLED PARKING SIGN ON EXISTING STEM.

HNo: 9  
LOT A

HNo: 11  
LOT B  
DP437120

HNo: 15  
LOT 1

HNo: 18  
LOT 28

RS-500(L-R)

RS-500(L-R)

RS-500(L)

RS-500(L)

RS-400(L-R)

3P

3P

3P

3P

NO STOPPING

RS-3(R)

RS-3(R)

RS-3(L)

RS-1-3(R)

R1-2

RS-3(R)

RS-3(R)

RS-3(L)

RS-1-3(R)

NO STOPPING

RS-3(R)

RS-3(R)

RS-3(L)

RS-1-3(R)

NO STOPPING

RS-3(R)

RS-3(R)

RS-3(L)

RS-1-3(R)

NO STOPPING

RS-3(R)

RS-3(R)

RS-3(L)

RS-1-3(R)

NO STOPPING

RS-3(R)

RS-3(R)

RS-3(L)

RS-1-3(R)

NO STOPPING

RS-3(R)

RS-3(R)

RS-3(L)

RS-1-3(R)

NO STOPPING

RS-3(R)

RS-3(R)

RS-3(L)

RS-1-3(R)

NO STOPPING

RS-3(R)

RS-3(R)

RS-3(L)

RS-1-3(R)

NO STOPPING

RS-3(R)

RS-3(R)

RS-3(L)

RS-1-3(R)

NO STOPPING

RS-3(R)

RS-3(R)

RS-3(L)

RS-1-3(R)

NO STOPPING

RS-3(R)

RS-3(R)

RS-3(L)

RS-1-3(R)

NO STOPPING

RS-3(R)

RS-3(R)

RS-3(L)

RS-1-3(R)

NO STOPPING

RS-3(R)

RS-3(R)

RS-3(L)

RS-1-3(R)

NO STOPPING

RS-3(R)

RS-3(R)

RS-3(L)

RS-1-3(R)

NO STOPPING

RS-3(R)

RS-3(R)

RS-3(L)

RS-1-3(R)

NO STOPPING

RS-3(R)

RS-3(R)

RS-3(L)

RS-1-3(R)

NO STOPPING

RS-3(R)

RS-3(R)

RS-3(L)

RS-1-3(R)

NO STOPPING

RS-3(R)

RS-3(R)

RS-3(L)

RS-1-3(R)

NO STOPPING

RS-3(R)

RS-3(R)

RS-3(L)

RS-1-3(R)

NO STOPPING

RS-3(R)

RS-3(R)

RS-3(L)

RS-1-3(R)

NO STOPPING

RS-3(R)

RS-3(R)

RS-3(L)

RS-1-3(R)

NO STOPPING

RS-3(R)

RS-3(R)

RS-3(L)

RS-1-3(R)

NO STOPPING

RS-3(R)

RS-3(R)

RS-3(L)

RS-1-3(R)

NO STOPPING

**SIGNAGE LEGEND**

	EXISTING SIGN TO BE REMOVED (TYPICAL)
	EXISTING SIGN TO BE RETAINED (TYPICAL)
	PROPOSED NEW SIGN (TYPICAL)
	EXISTING SIGN STEM TO BE REMOVED

NOTES:  
LINES TO BE INSTALLED IN ACCORDANCE WITH THE RMS DELINEATION GUIDELINES AND AUSTRALIAN STANDARDS. REFER TO DWG 24-11.SOU.002 FOR LINES AND DWG 24-11.SOU.016 FOR STEM FOOTING DETAIL.  
FOK DENOTES FACE OF KERB

**ISSUED FOR CONSTRUCTION**  
15 July 2016

No.	Revision	Date	By	Check	Approved
2	ISSUED FOR CONSTRUCTION	15/07/16	IC	IC	
1	ISSUED FOR CONSTRUCTION	22/06/16	IC	IC	

Scale 1:100 @ A1

10 Regent Street  
Chippendale NSW 2008  
p 02 9282 9600  
f 02 9282 9277  
www.completeurban.com.au

**COMPLETE**  
a sense of community  
Randwick City Council

Client and Job: RANDWICK CITY COUNCIL  
Title: CSELR ANGLE PARKING PROJECT - SOUDAN STREET, RANDWICK  
Scale: 1:100 @ A1  
Drawn: M.J. Design: M.J.  
Checked: N.P. Checked: I.G.  
Approved: FOR CONSTRUCTION  
No. 2411.SOU.010